



High Performance Embedded Vision Machine With Camera Link

FEATURES

- Stand alone complete vision system
- Performance equivalent to 4 GHz pentium
- Fully IP addressable
- Very low power consumption
- 2 base or 1 medium/full Camera Link
- Realignment of the 3 color lines in FPGA
- Compatible with linear cameras
- Compatible with area scan cameras
- Intuitive graphical development environment
- Optimised vision library
- Open system to port your own C applications
- Linux available

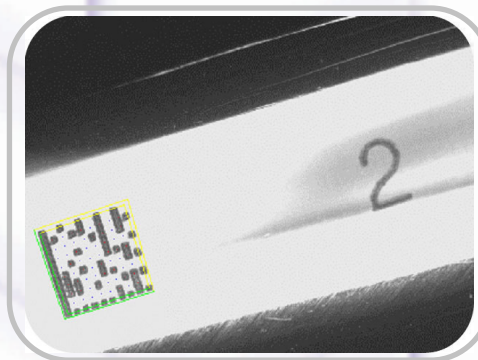


APPLICATION EXAMPLES:

OCR/OCV



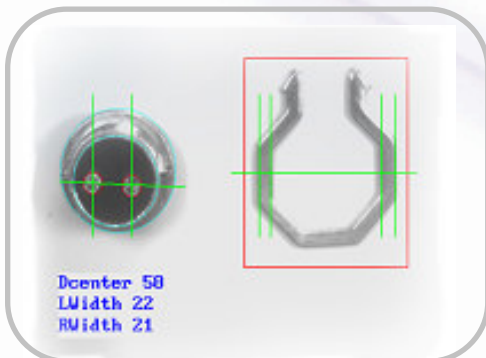
1D/2D Barcodes



Blob Analysis



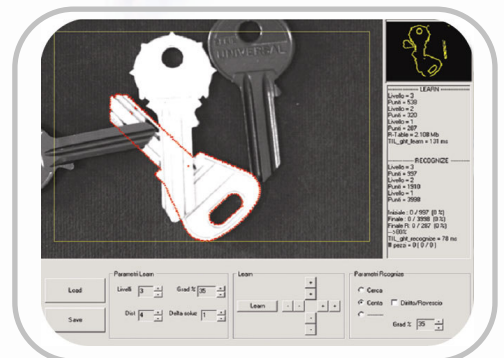
Gauging



Color Analysis

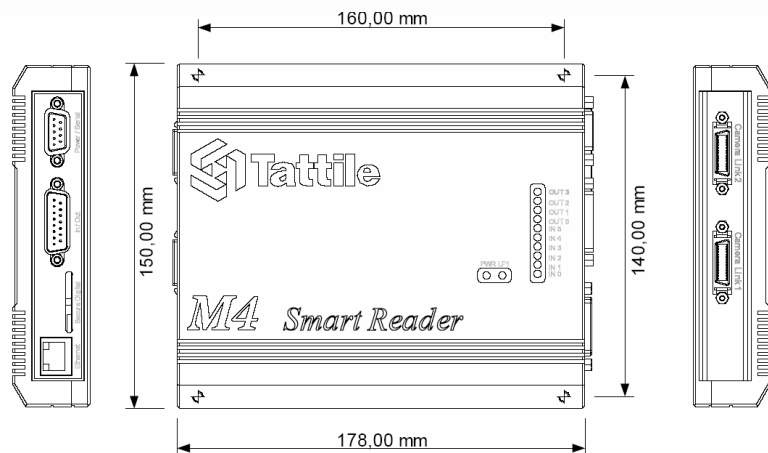


Pattern Recognition



SOFTWARE FEATURES

OPERATING SYSTEM	
Antares Engine	Standard Graphical Approach with Complete Imaging Library
Linux	Real Time Linux Embedded
Proprietary Tattile O.S.	Multitask O.S. for Custom Applications
PROGRAMMING LANGUAGES	
Antares Explorer	Standard Graphical Environment with Complete Imaging Library
ANSI C	Standard C Environment TIL (Tattile Image Library) Supported
ARM Assembler	ARM Assembler Environment TIL (Tattile Image Library) Supported
COMMUNICATION	
Firm ware Update	Ethernet or Serial Capabilities
Data Exchange	TCP/IP, UDP/IP, RS232 or RS485
Data Storage	Secure Digital Port
CUSTOMIZING TOOLS	
Custom Tool	It is Possible to Plug-In Your C Tool in Standard Antares Engine Structure
Custom Program	You Can Write a Complete New C Application Program
Software Porting	Software Team to Support the Porting of Your Library



TECHNICAL FEATURES

SYSTEM	
Synchronization	External Trigger Without Delay
Input	2 Base or 1 Full/Medium Camera Link Channels
Frame-Rate	30 fps @ 1600x1200 Full Resolution
Frame-Rate	200 fps @ VGA Full Resolution
Frame-Rate	9000 Hz @ Trilinear Color Linescan
INPUT/OUTPUT	
6 Digital Output	24 Vdc PNP 100mA Optoisolated
6 Digital Input	24 Vdc PNP 10mA Optoisolated
Secure Digital	1 Data Channel
1 Encoder Input	24 Vdc PNP 10mA (500 KHz)
COMMUNICATION	
Ethernet 100 Mbps	TCP-IP, UDP, FTP, HTTP
Serial Port	RS485
Serial Port	RS232
ENVIRONMENTAL	
Operating Temperature	-10° to 50° C
Operating Humidity	10 to 80% non cond.
Storage Temperature	-20 to 65° C
Storage Humidity	10 to 90% non cond.
Power Supply	12 to 35 Vdc +/- 5% 7W



Package	Anodized Aluminum
Weight	1000g
Protection Level	IP 52